

SPLAT!

Synonym and Antonym Challenge



A synonym is a word that has a similar meaning to another word in the same language. An antonym is a word that has an opposite meaning to another word in the same language.

For each pair of words, identify whether the pair are antonyms or synonyms by writing an "A" or "S" in the box beside the pair of words.

Attractant
Repellent

Decay
Decompose

Notice
Distinguish

Novel
Old

Disrupt
Continue

Infested
Empty

Bait
Lure

Bole
Trunk

Mature
Immature

Approximately
Almost

Appear
Emerge

Treatment
Action

Effect
Impact

Living
Nonliving

SPLAT!

eyeChallenge



Each of the following images represents something from the article. Two of the images did not appear in the article, but they relate to the content in the article. Explain what each of these images represents. You may write your explanation or hold a class discussion. If you write your explanation, use complete sentences, proper spelling and grammar, and appropriate punctuation.

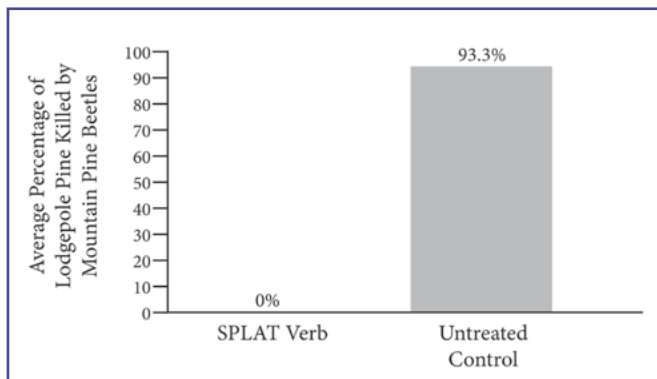


Illustration by Stephanie Pfeiffer.

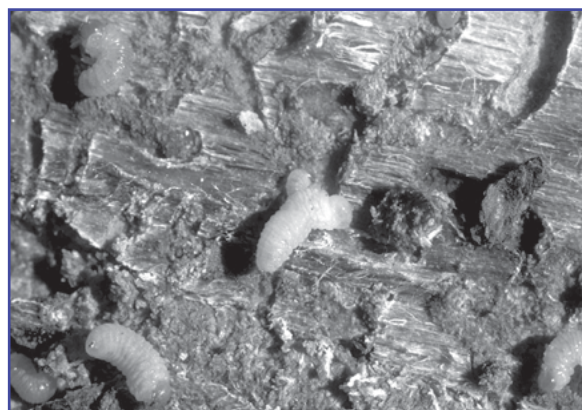


Photo by Dave Powell, USDA Forest Service, via <http://www.bugwood.org>.

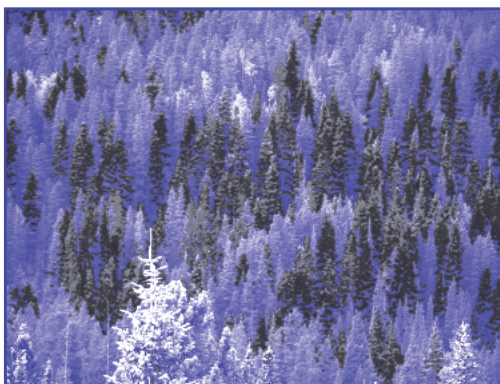


Photo courtesy of Babs McDonald.



Map by Carey Burda.

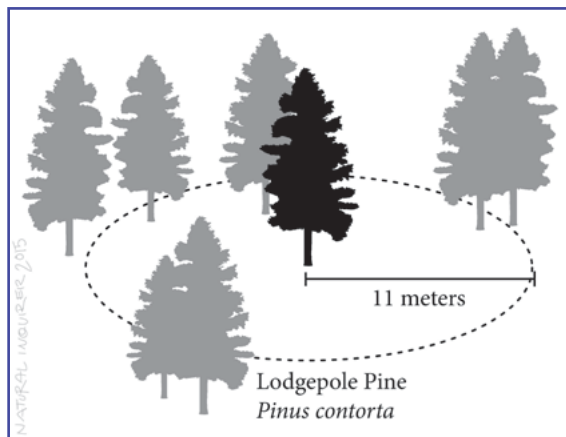


Illustration by Stephanie Pfeiffer.



USDA Forest Service photo via <http://www.bugwood.org>.