



United States Department of Agriculture

1915–2015

100 Years of Forest Service Research & Development



Raymond E. Marsh
Deputy Chief,
Research & Development
1935–1937



Pictured:
Forest
Service
R&D
at work.

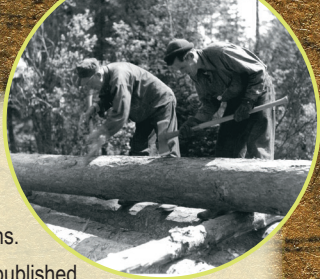
1925 1935 1945 1955 1965 1975 1985 1995 2005 2015



Forest Service
May 2016

Marsh • 1935–1937

Research & Development MILESTONES



- In 1935, the branch of Research was organized into Forest Research Divisions.
- The Forest Products Laboratory (FPL) published the Wood Handbook in 1935. The most recent Wood Handbook was published in honor of the FPL's Centennial in 2010.
- The Palustris Experimental Forest was established in 1935 in Louisiana, a result of the efforts of scientist Philip C. Wakeley to develop reforestation techniques for southern pines. Wakeley and other scientists grew seedlings and planted nearly 700,000 of them on the Palustris. These seedlings helped foster a better understanding of how to successfully reforest southern pine forests.
- The Norris-Doxey Cooperative Farm Forestry Act and the Bankhead Jones Farm Tenant Act, both enacted in 1937, boosted Forest Service economics research programs.
- In 1935, the Rocky Mountain Forest and Range Experiment Station (now the Rocky Mountain Research Station) was established in Fort Collins, CO. This station was the last of 12 funded forest and range experiment stations.
- Marsh worked with forestry in Sweden, Finland, and Norway. In 1958, Marsh was honored with the Royal Order of Vasa by the Swedish government for his contributions. Marsh's honor foreshadowed the important role of Forest Service Research and Development in international forestry.

USDA is an equal opportunity provider, employer, and lender



<http://www.fs.fed.us/research>