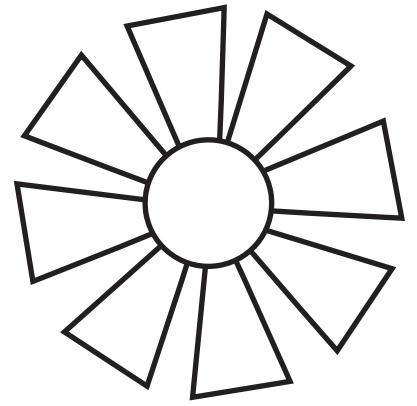
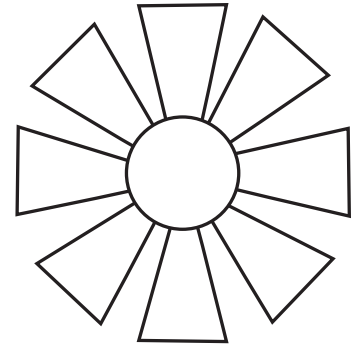


"BEE"

A SCIENTIST COLORING BOOK



Name _____ Date _____



Produced by

Cradle of Forestry in America Interpretive Association
Forest Service, an agency of the U.S. Department of Agriculture

Production Staff

Jessica Nickelsen, Cradle of Forestry in America Interpretive Association
Brian Cooke, Cradle of Forestry in America Interpretive Association
Babs McDonald, Forest Service
Michelle Andrews, University of Georgia
Samantha Dean, Cradle of Forestry in America Interpretive Association
Amber Painter, Cradle of Forestry in America Interpretive Association
Nickola Dudley, Graphic Design

Cradle of Forestry in America Interpretive Association

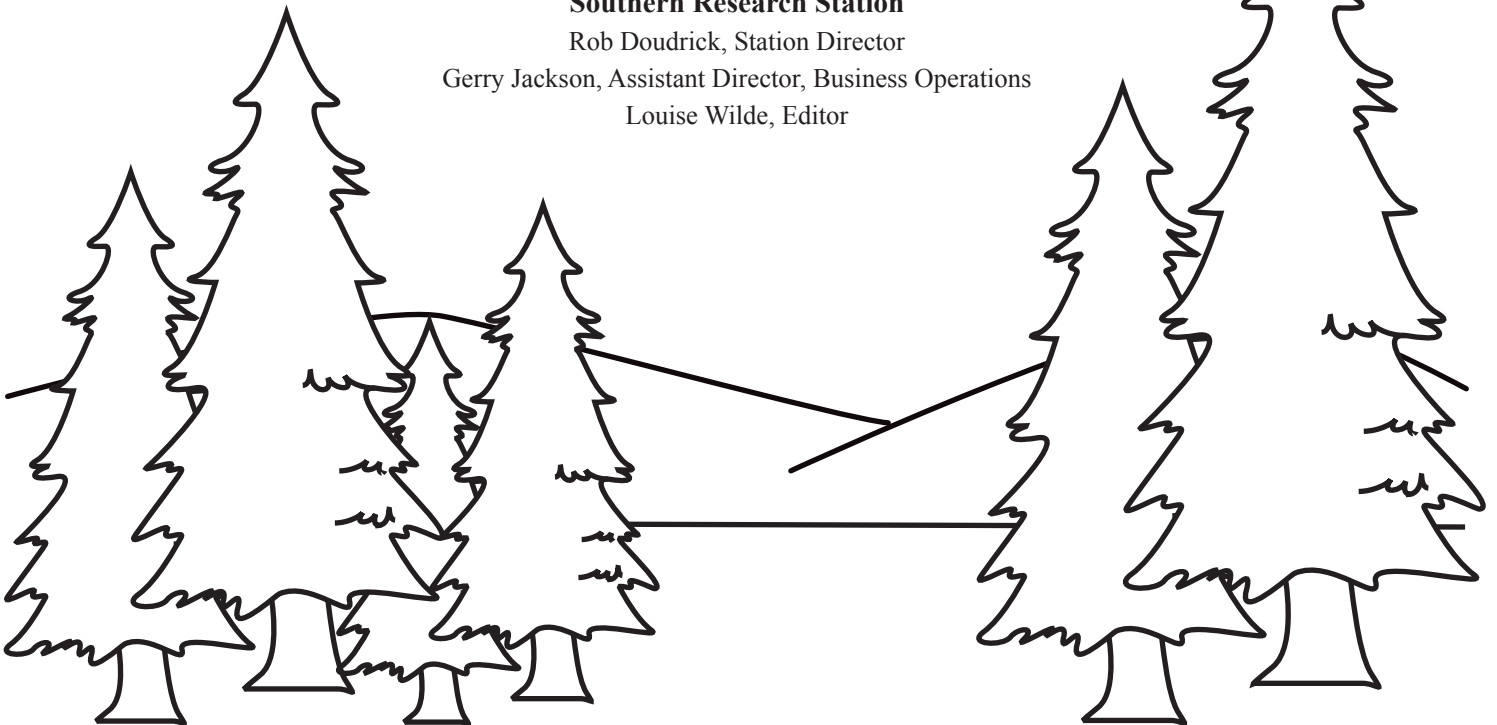
Hope Ascher, Chairperson
Carlton Murrey, Executive Director
Adam DeWitte, Director of Education

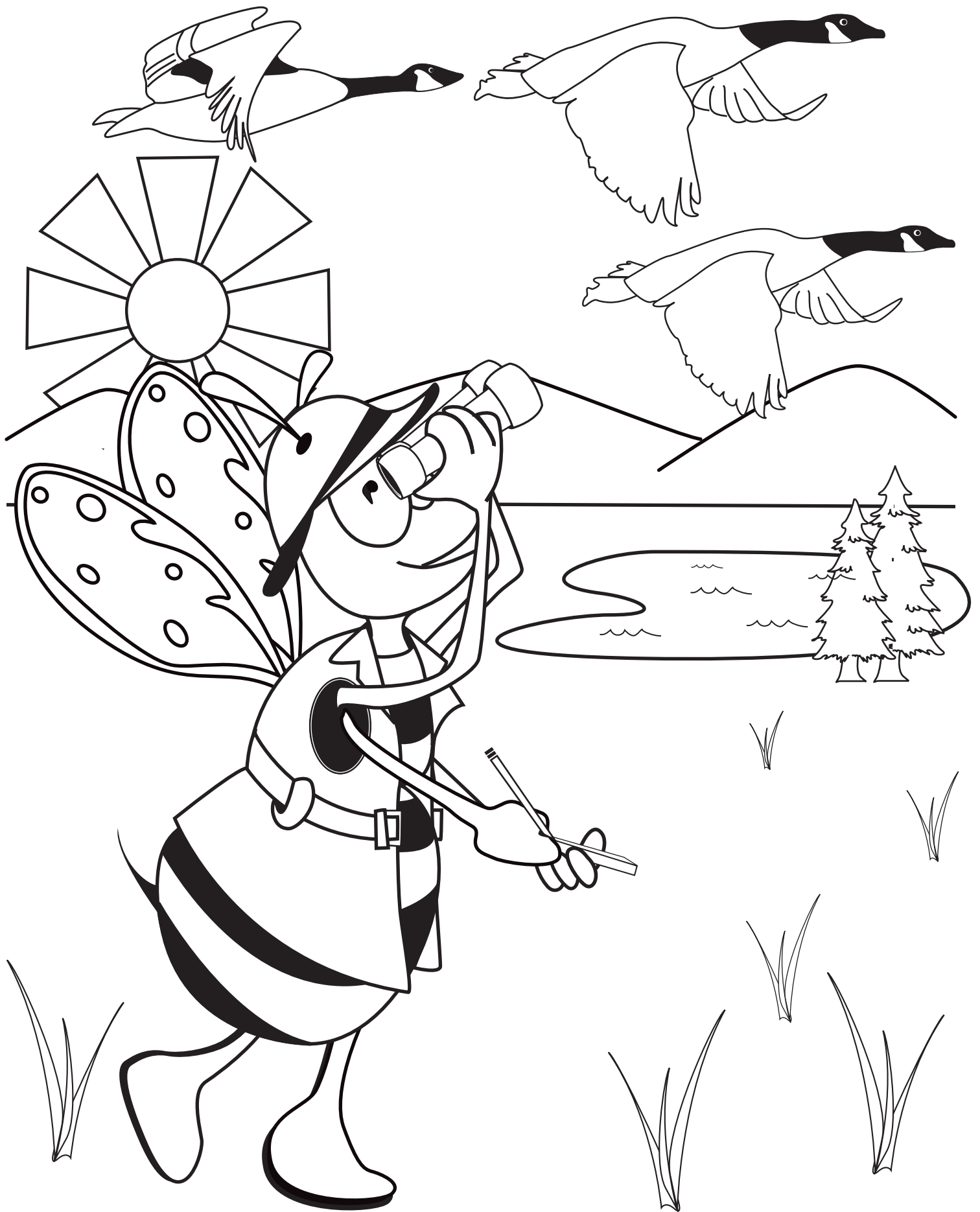
Forest Service

Thomas L. Tidwell, Chief
Carlos Rodriguez-Franco, Acting Deputy Chief, Research and Development
Michael Rains, Station Director, Northern Research Station and Forest Products Laboratory
James E. Hubbard, Deputy Chief, State and Private Forestry
Vacant, Staff Director, Knowledge Management and Communications
Michiko Martin, Staff Director, Conservation Education

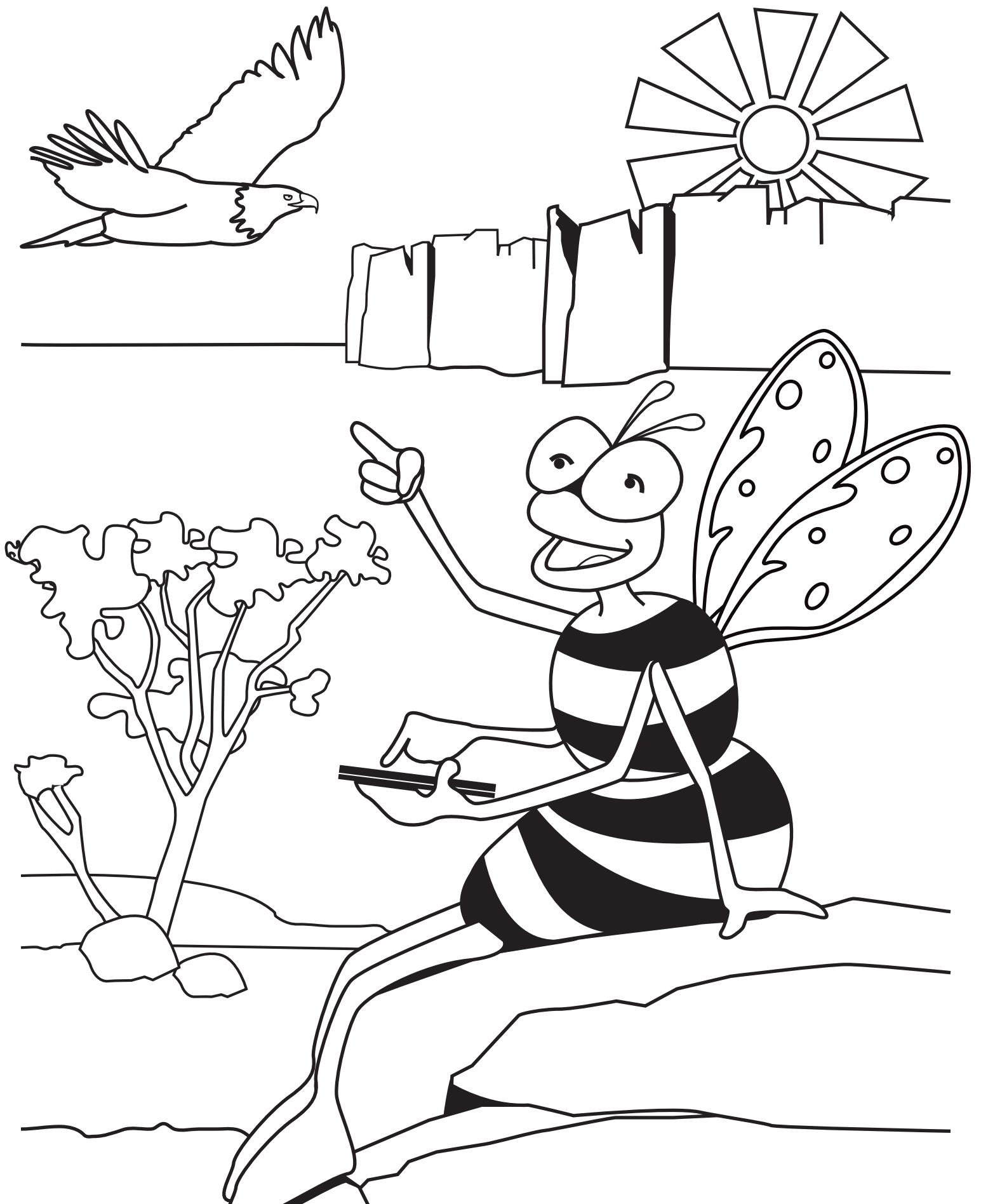
Southern Research Station

Rob Doudrick, Station Director
Gerry Jackson, Assistant Director, Business Operations
Louise Wilde, Editor

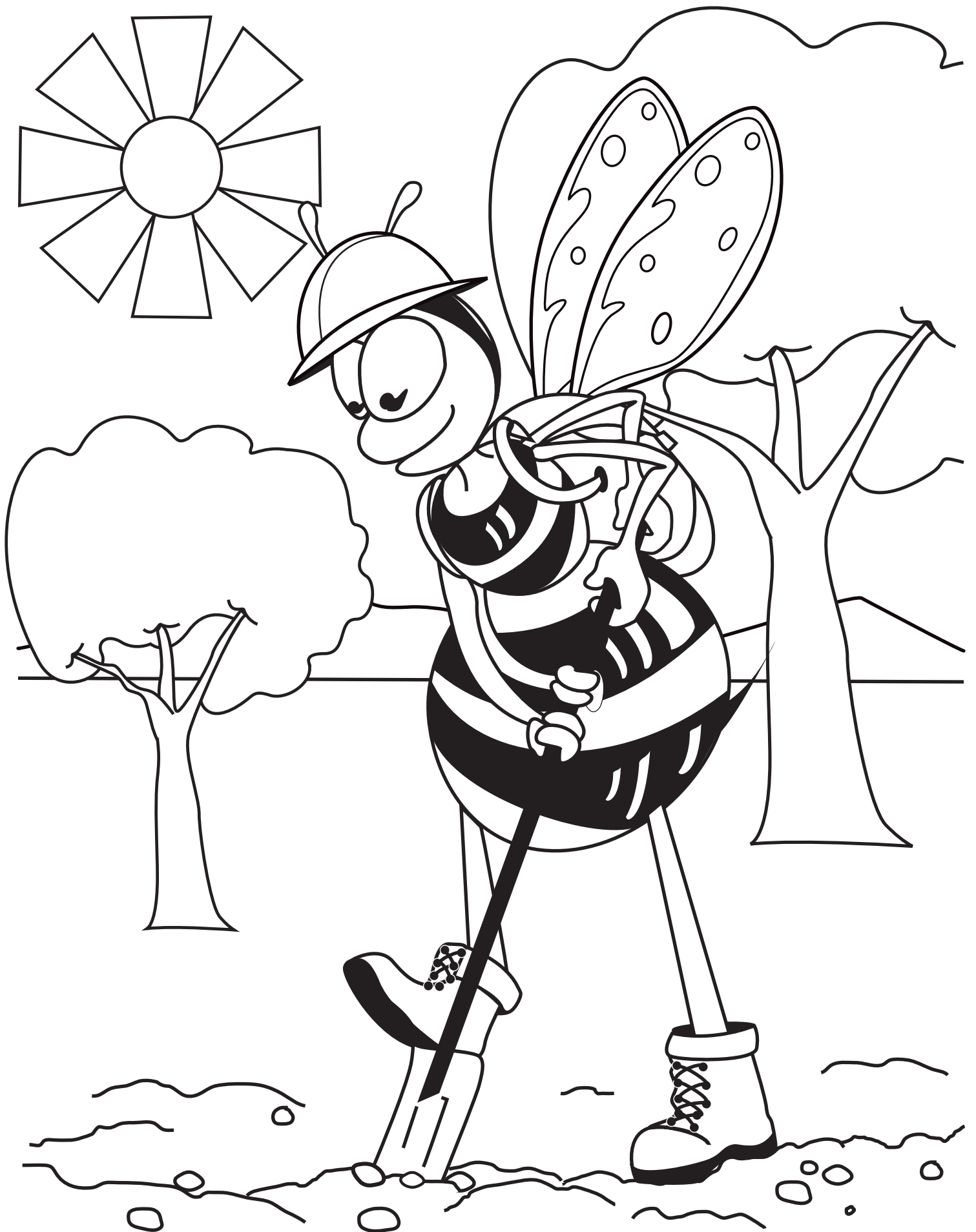




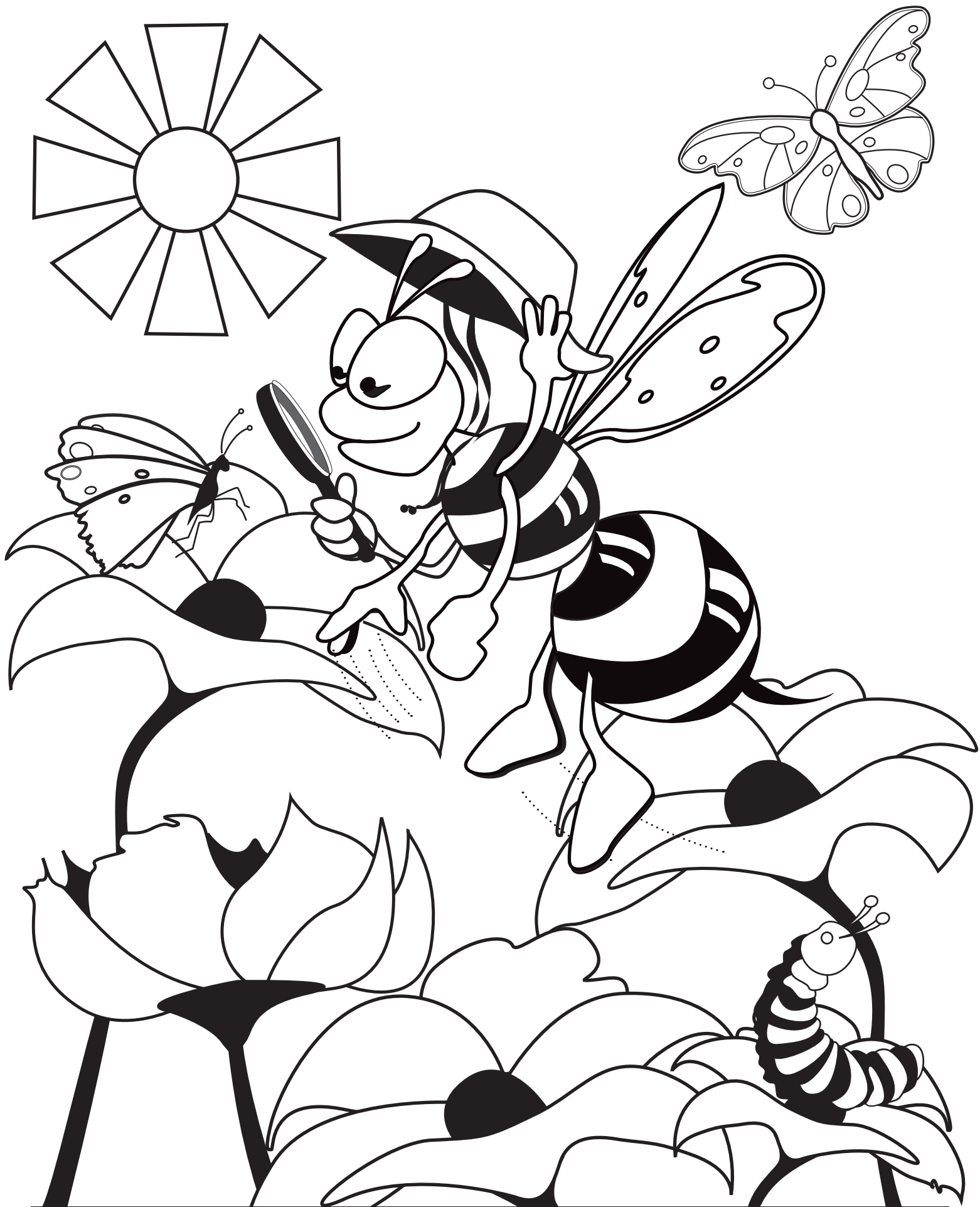
Some scientists study birds.



Some scientists explore the natural world.



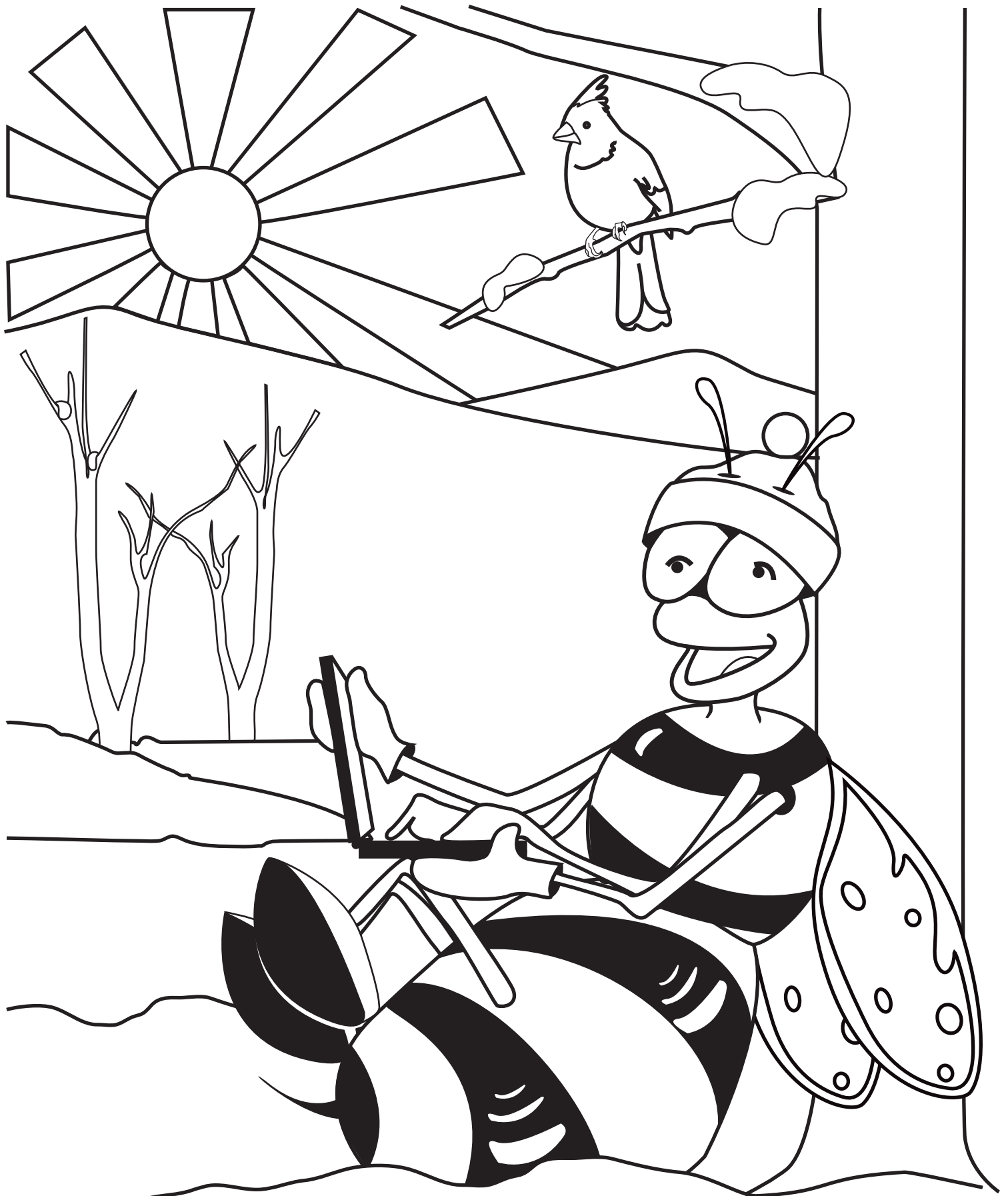
Some scientists study soil.



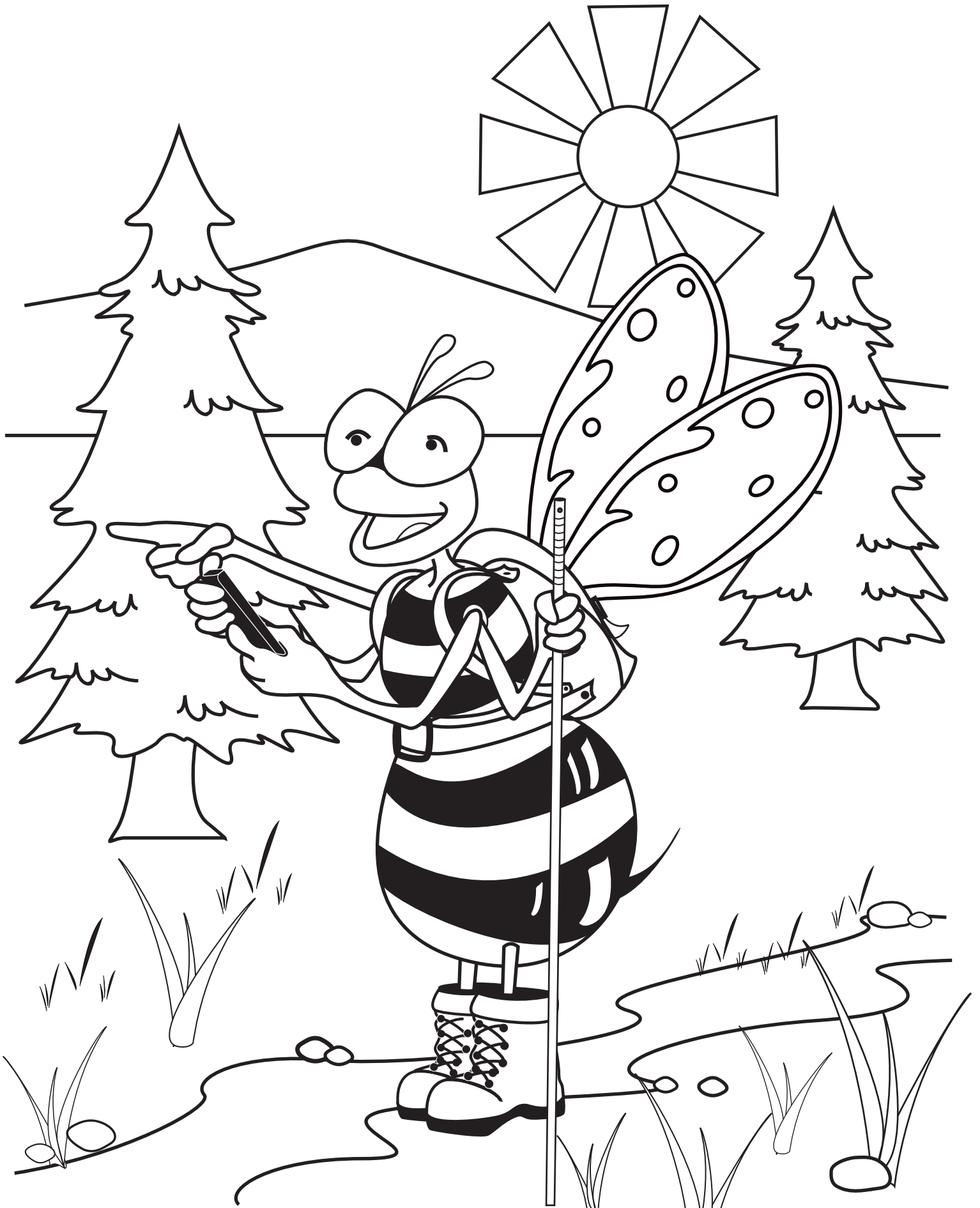
Some scientists study insects.



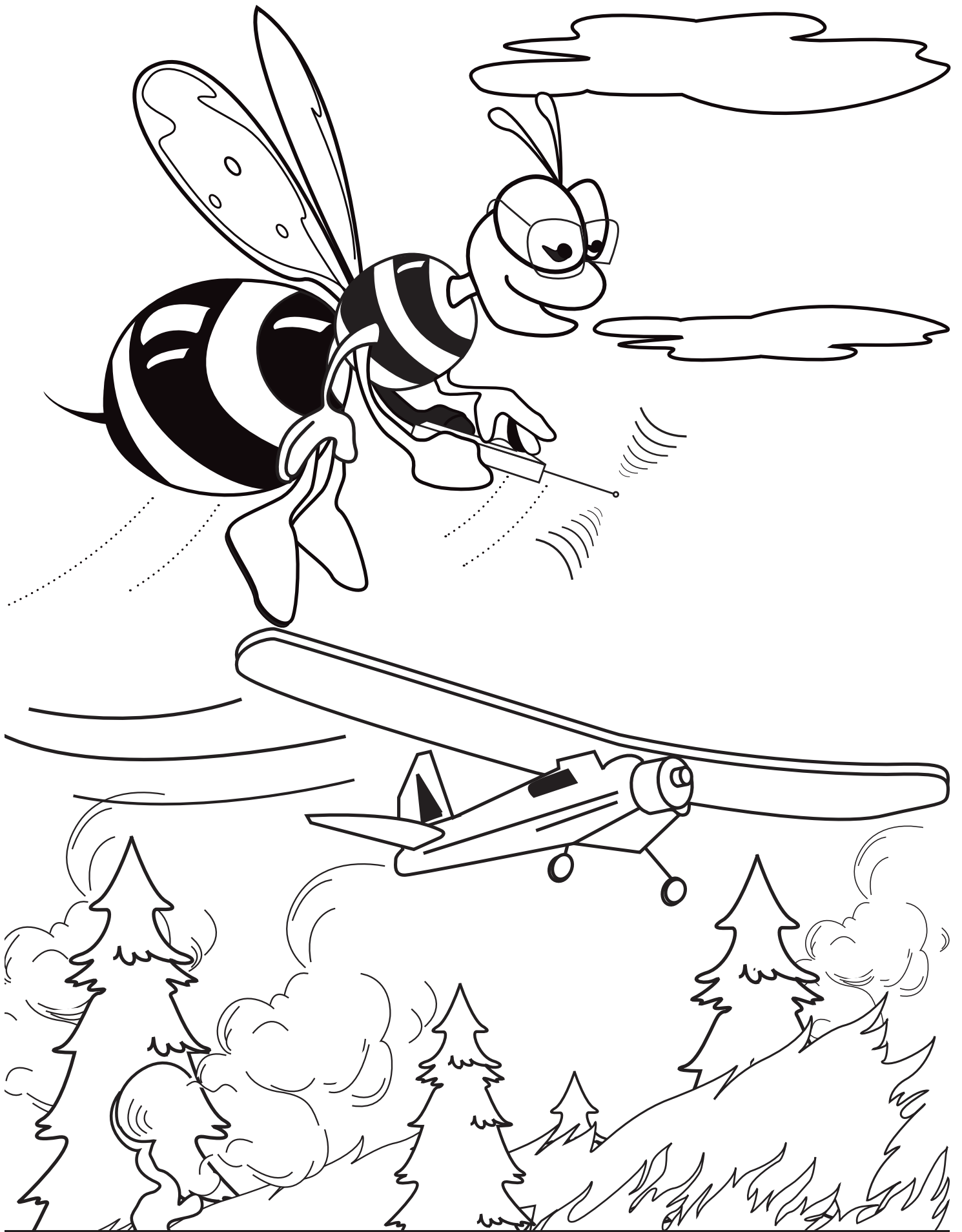
Some scientists study how people enjoy the outdoors.



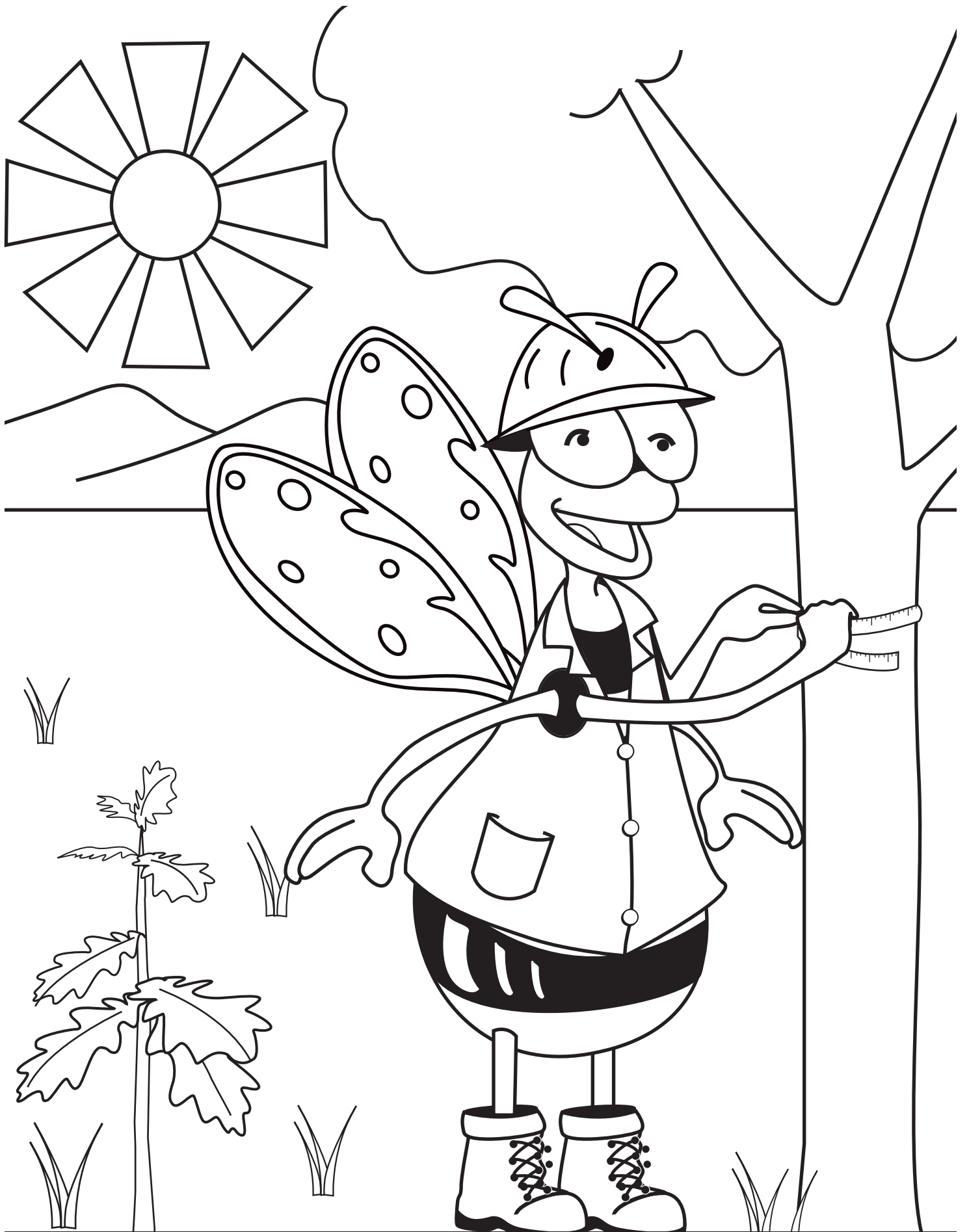
Some scientists study the places where animals live.



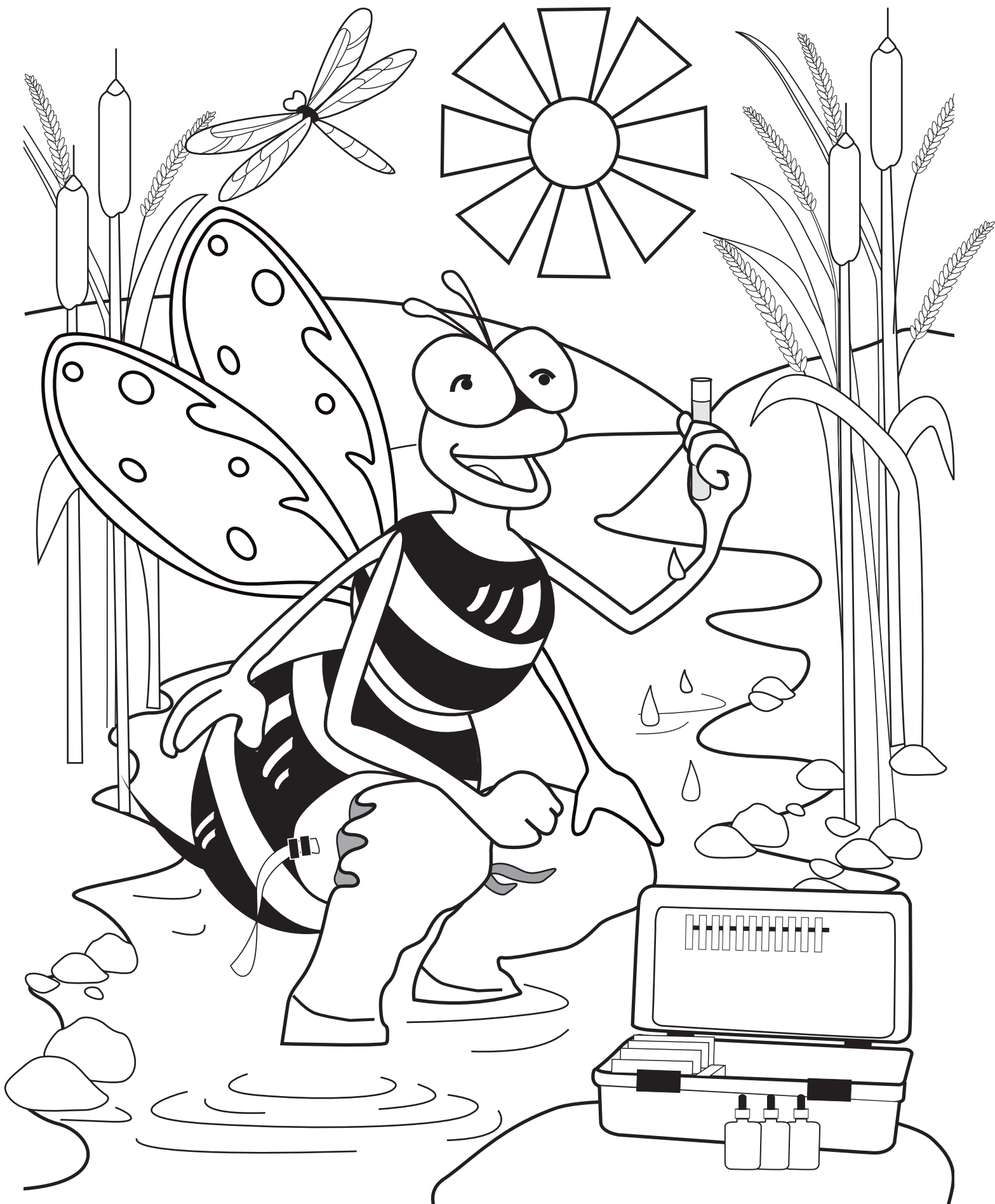
Some scientists study how people value natural areas.



Some scientists study weather and fire.



Some scientists study trees.



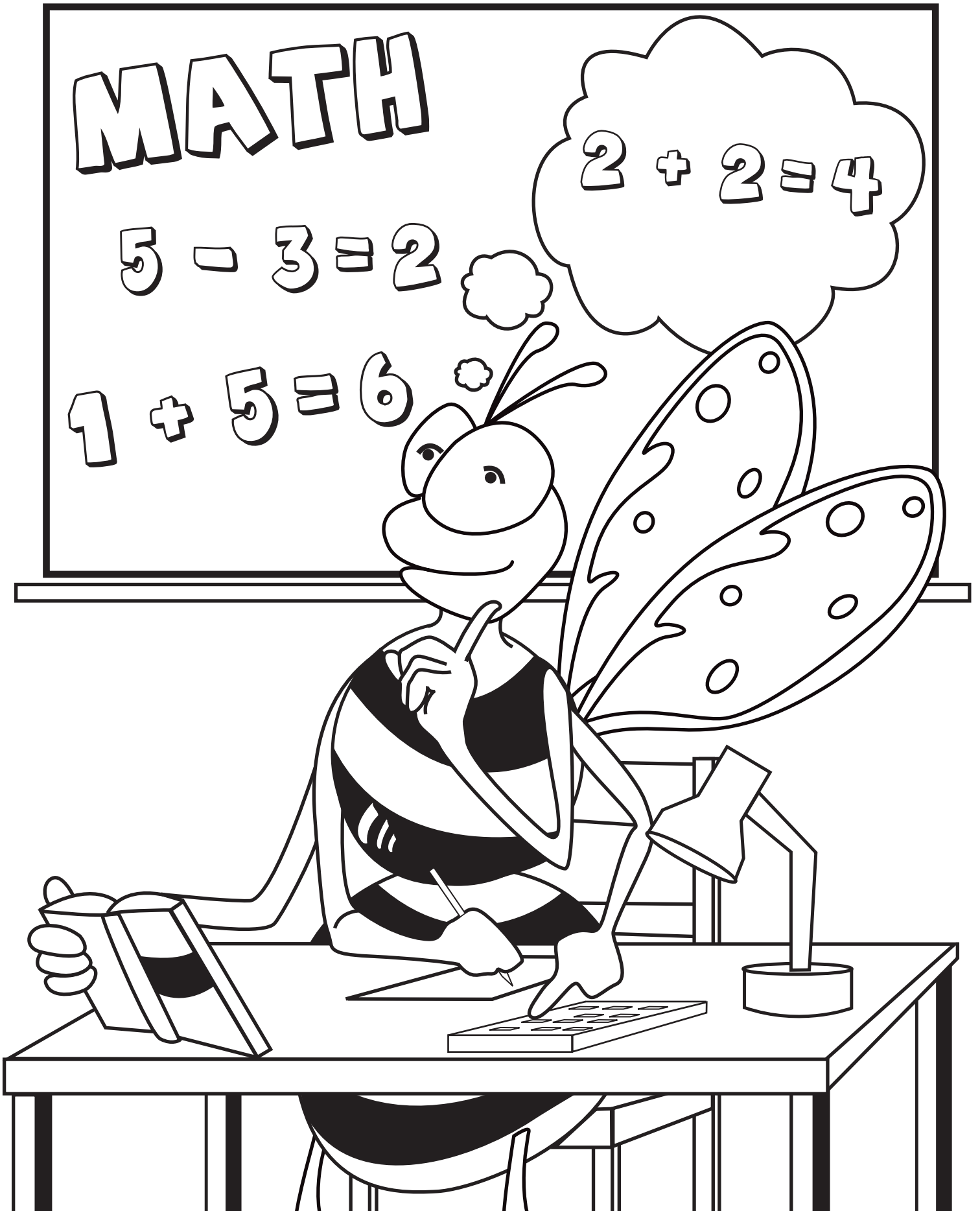
Some scientists study water.

MATH

$$5 - 3 = 2$$

$$1 + 5 = 6$$

$$2 + 2 = 4$$



Some scientists use math to study the environment.

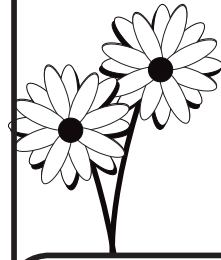
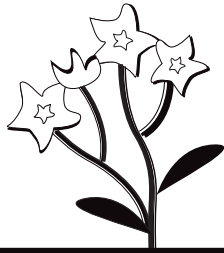
"BEE"

a-mazed at science!



Start

Help the bee
find its way to
the flower!



Finish





What is the Cradle of Forestry in America Interpretive Association?

The Cradle of Forestry in America Interpretive Association is a 501(c)3 nonprofit organization based in Pisgah Forest, North Carolina. The interpretive association strives to help people better understand ecology through recreation and education opportunities. Their products include the following:

- Campground and recreation area management.
- Educational programs and services, including *Natural Inquirer*, *Investi-gator*, *Natural IQ*, *Natural Inquirer* Reader Series, *Leaf Prints*, and scientist cards (<http://www.naturalinquirer.org>).
- Sales of forest-related gifts and education materials.
 - Workshops, newsletters, and publications.
- Partnership with the Forest Service to provide programming at the Cradle of Forestry Historic Site.

<http://www.cfaia.org>



What is the Forest Service?

The Forest Service is part of the United States Department of Agriculture (USDA). The Forest Service is made up of thousands of people who care for the Nation's forest land. The Forest Service manages more than 150 national forests and 20 national grasslands. These are large areas of trees, streams, and grasslands. National forests are similar in some ways to national parks.

Both are public lands, meaning they are owned by the public and managed for the public's use and benefit. Both national forests and national parks provide clean water, homes for the animals that live in the wild, and places for people to do fun things in the outdoors. National forests also provide resources for people to use, such as trees for lumber, minerals, and plants used for medicines. Some people in the Forest Service are scientists whose work is presented in the *Natural Inquirer* journals.

Forest Service scientists work to solve problems and provide new information about natural resources so that we can make sure our natural environment is healthy, now and into the future.

<http://www.fs.fed.us>

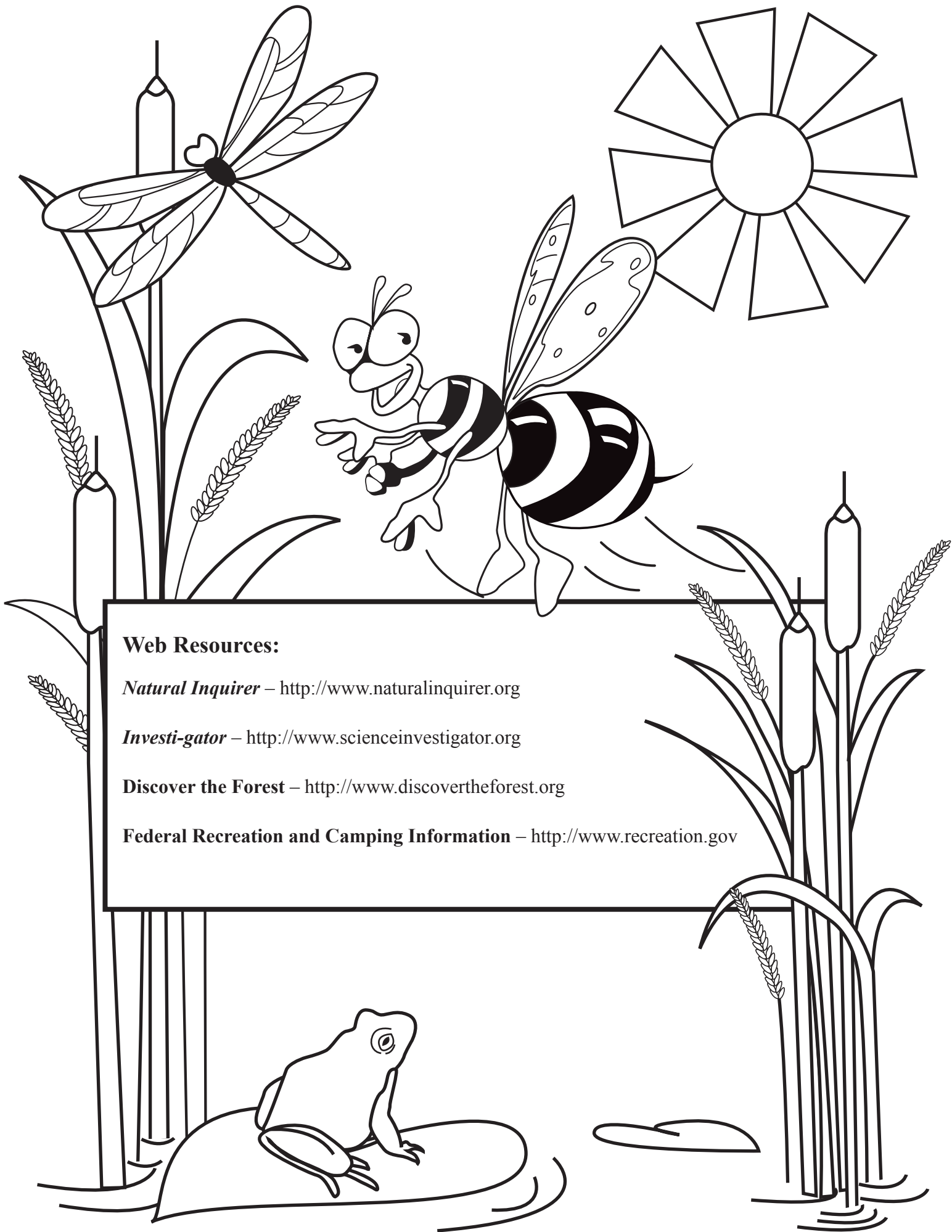
In accordance with Federal civil rights law and U.S. Department of Agriculture (USDA) civil rights regulations and policies, the USDA, its Agencies, offices, and employees, and institutions participating in or administering USDA programs are prohibited from discriminating based on race, color, national origin, religion, sex, gender identity (including gender expression), sexual orientation, disability, age, marital status, family/parental status, income derived from a public assistance program, political beliefs, or reprisal or retaliation for prior civil rights activity, in any program or activity conducted or funded by USDA (not all bases apply to all programs). Remedies and complaint filing deadlines vary by program or incident.

Persons with disabilities who require alternative means of communication for program information (e.g., Braille, large print, audiotape, American Sign Language, etc.) should contact the responsible Agency or USDA's TARGET Center at (202) 720-2600 (voice and TTY) or contact USDA through the Federal Relay Service at (800) 877-8339. Additionally, program information may be made available in languages other than English.

To file a program discrimination complaint, complete the USDA Program Discrimination Complaint Form, AD-3027, found online at http://www.ascr.usda.gov/complaint_filing_cust.html and at any USDA office or write a letter addressed to USDA and provide in the letter all of the information requested in the form. To request a copy of the complaint form, call (866) 632-9992. Submit your completed form or letter to USDA by: (1) mail: U.S.

Department of Agriculture, Office of the Assistant Secretary for Civil Rights, 1400 Independence Avenue, SW, Washington, D.C. 20250-9410; (2) fax: (202) 690-7442; or (3) email: program.intake@usda.gov.

USDA is an equal opportunity provider, employer, and lender.



Web Resources:

Natural Inquirer – <http://www.naturalinquirer.org>

Investi-gator – <http://www.scienceinvestigator.org>

Discover the Forest – <http://www.discovertheforest.org>

Federal Recreation and Camping Information – <http://www.recreation.gov>