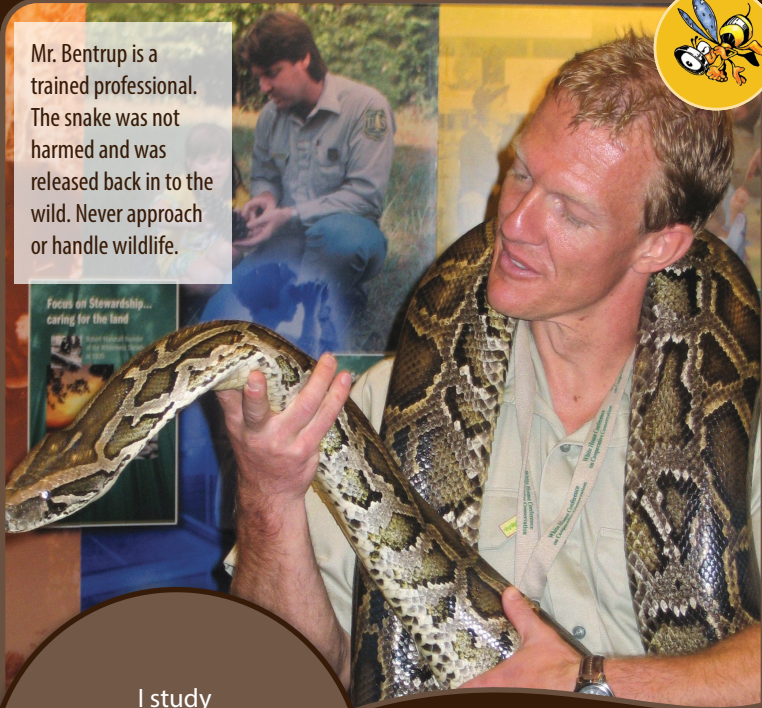
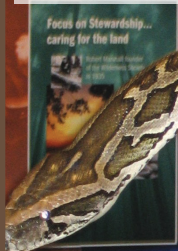




Mr. Bentrup is a trained professional. The snake was not harmed and was released back in to the wild. Never approach or handle wildlife.



I study agroforestry. Agroforestry is the use of trees in agriculture to provide multiple benefits to society.

**Gary Bentrup**  
Research Landscape Planner  
MLA, Utah State University  
USDA Forest Service scientist

<http://www.naturalinquirer.org>



### Important Scientist Characteristics

- ★ Looking at complex issues from many viewpoints
- ★ Thinking outside the box
- ★ Ability to see the larger picture

**Example of a simple research question I have tried to answer:** How can we design an agroforestry planting to enhance wildlife habitat, protect drinking water and provide an economic product for the farmer?

### Technology or equipment used in research:

We use geographic information systems (GIS), a computer-based system to manage, analyze and map all types of geographical data. We also use software to modify digital photographs to depict potential changes to the landscape so that scientists and the public can communicate more easily.

### : Most Exciting Discovery

- : My most exciting discovery
- : is that we can design and
- : manage our landscapes
- : to work in harmony with
- : nature and not against it.

### : When did you know you wanted to be a scientist?

- : Growing up on a farm, I
- : was always interested in
- : natural resources but I didn't
- : want to specialize in one
- : area. During my senior year
- : in high school, I learned
- : about the field of landscape
- : architecture and planning
- : which allows me to work
- : across many disciplines.